

The Power of Integrated Public Transport in Salvador

2026 STA Series

Pablo Souza

Secretary of Mobility of Salvador

Secretaria de
Mobilidade



**Prefeitura
de Salvador**

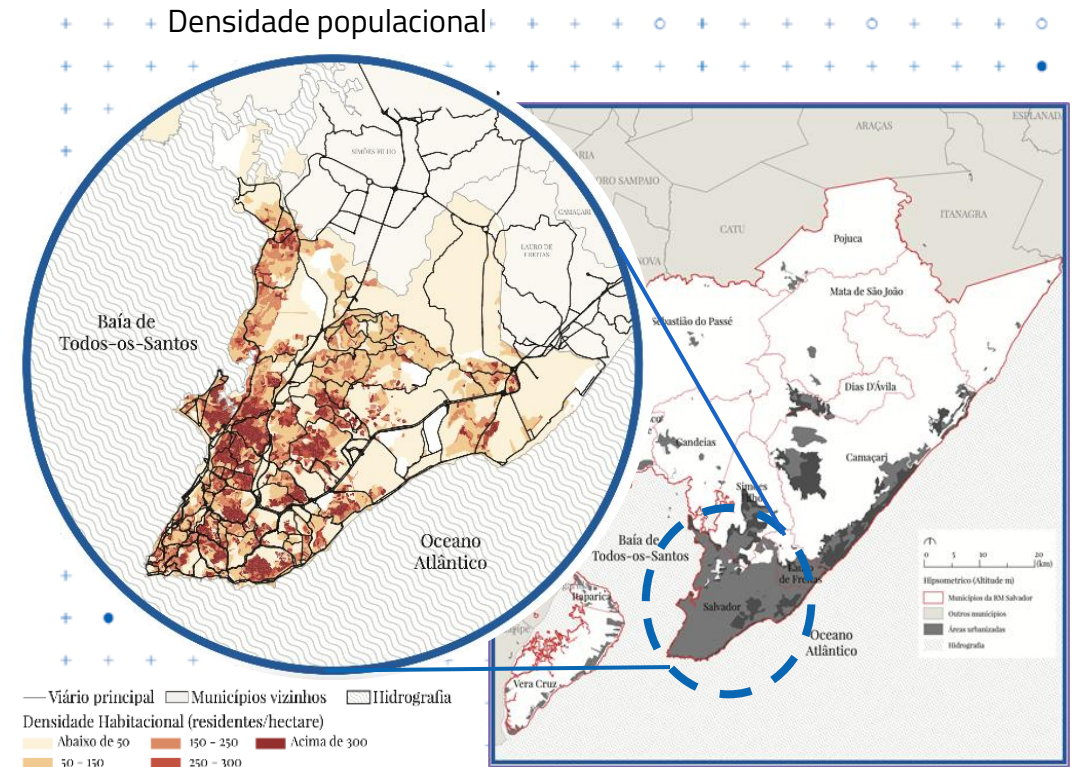
Salvador at a glance

General information:

- Total area: 693.8 km²
- Population: 2,568,928 inhabitants (IBGE, 2024)
- Population density: 3,486 inhabitants/km²
- HDI: 0.75

Public transport:

- 1,840 buses in operation
- 1.1 million passengers per weekday
- Operated by two private companies and one BRT consortium
- Concession contracts valid until 2039



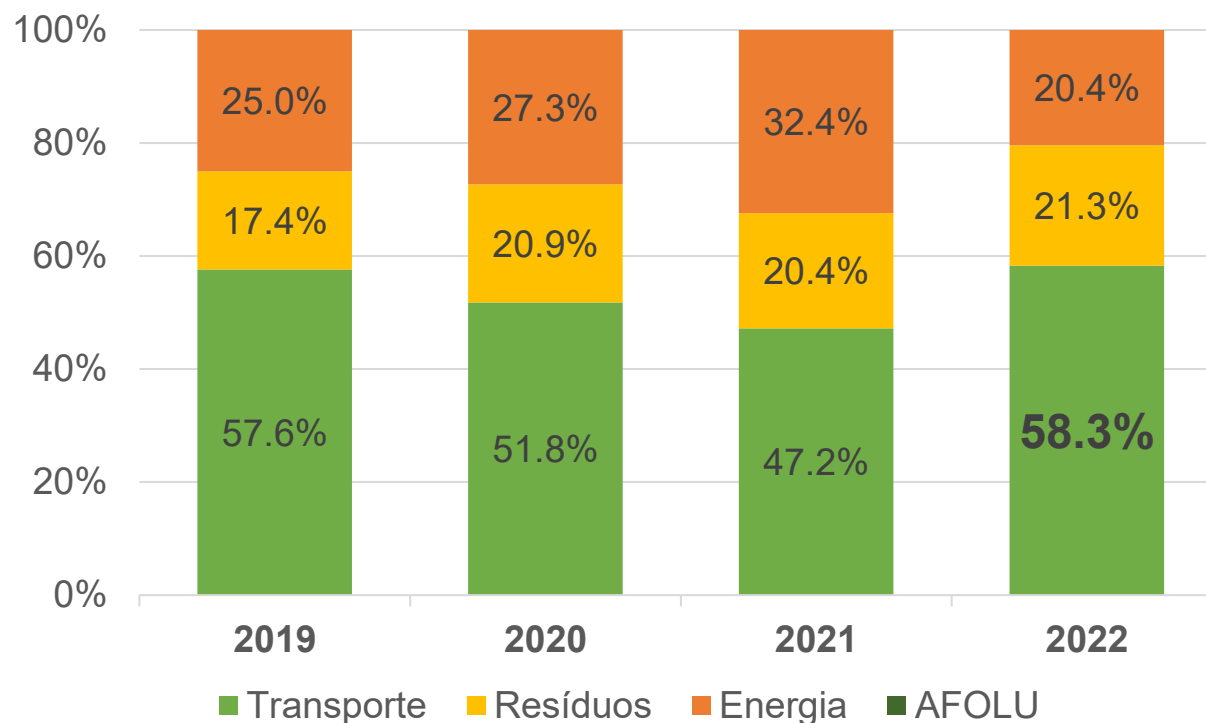
Salvador at a glance

- In 2018, Salvador's Urban Mobility Plan (**PlanMob Salvador**) established strategic alternatives for the future of mobility over the **next 30 years**
- The plan includes proposals, programs, and actions focused on: Active Mobility, Public Transport, Road Infrastructure and Traffic Management
- The revision of the plan is scheduled to begin next year



Salvador at a glance

Passenger and freight transportation account for **58.3%** of Salvador's greenhouse gas emissions



Evolução das emissões de GEE em MtCO₂e por setor (%)
(3º Inventário de GEE de Salvador, 2022)

Salvador is the only city in Latin America to reduce its GHG emissions by more than 30%



Salvador's Electrification Goals



- By 2028, at least 50% of the BRT fleet will consist of zero emission buses
- By 2028, operate an electric bus route in the Historical Center
- By 2032, 40% of the public transport fleet will be composed of cleaner and more efficient vehicles
- Achieve carbon neutrality in public transport by 2049

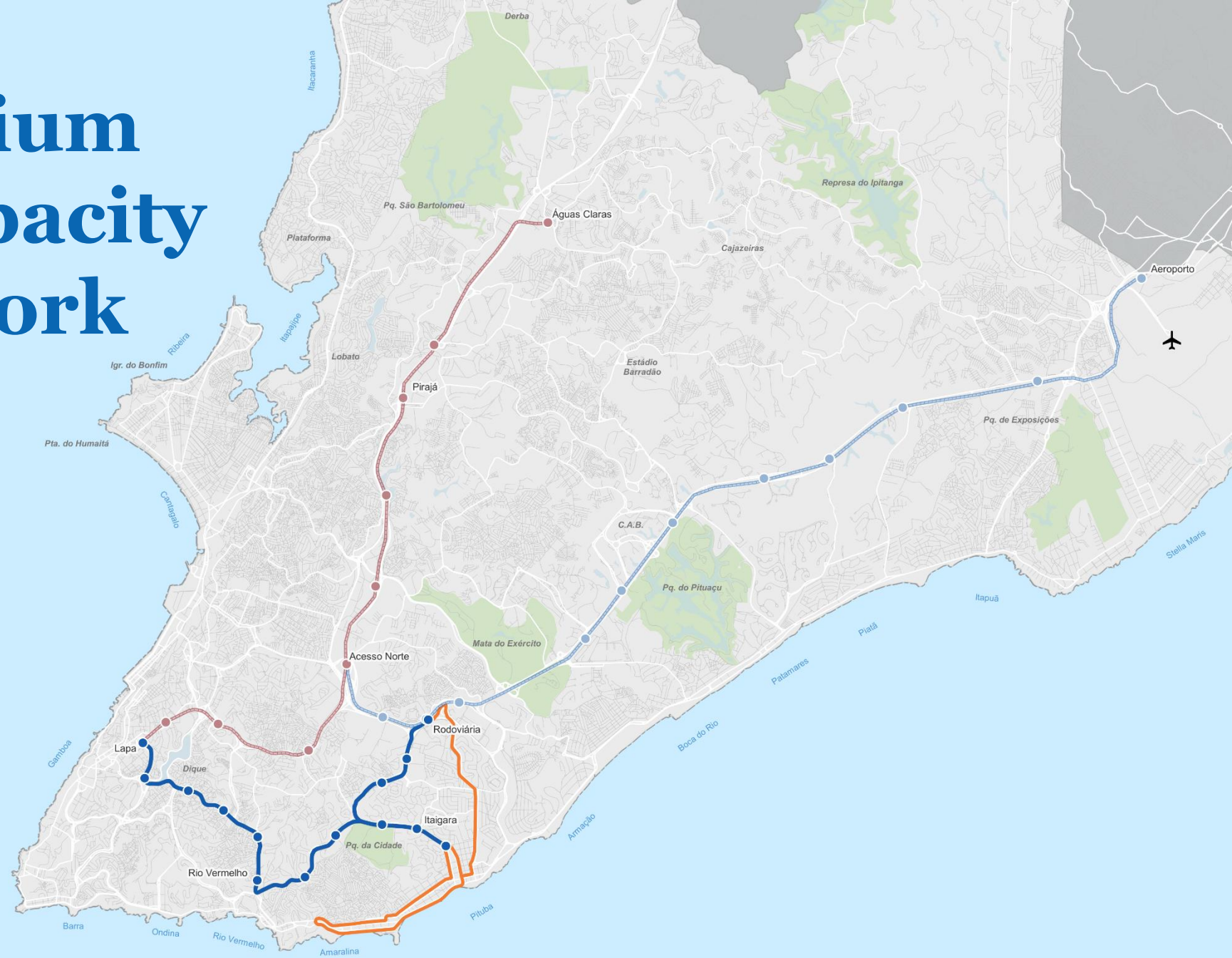
BRT Salvador

Launched in September 2022, BRT Salvador has already been **visited by 50+ cities**, including international delegations from cities such as Buenos Aires and Maputo.



Current Medium and High-Capacity Transit Network

12 km of BRT
11 km of BRS
34 km of Metro



BRT Salvador



Segmento 1

Segmento 2

Segmento 3

+7km

5 km

Secretaria de
Mobilidade



PRIMEIRA CAPITAL DO BRASIL

BRT Salvador

- 90 mil passengers/day
- 92 buses, including 8 e-buses and 2 articulated
- 5 routes
- 12 km of dedicated lanes
- 14 stations
- 1 public charging infrastructure



BRT Salvador

- 8 electric buses currently in operation on the BRT system (9% of the fleet)
- Deployment agreed upon during the 2022 economic and financial rebalancing process



Public Charging infrastructure

- 10 charging stations with 160 kW each, Dual-gun (CCS2 standard)
- 2 MVA medium-voltage substation
- Investment of BRL ~4 million
- Capacity to charge 40+ buses





Charging Strategy

At day one:

- Overnight only

Nowadays:

- Mixed strategy with opportunity charging
- Optimized to serve more than 3 buses per charger

Energy Procurement



At day one:

- Regulated market (A4 – green seasonal tariff)
- Off-peak charging only: 00:00–17:59 and 21:00–23:59

Nowadays:

- Energy procurement through the free energy market
- Five-year supply contracts

Ebuses | operational demonstrations

- Joint testing protocol developed with bus operators
- Daily monitoring of operational performance
- Passenger and driver satisfaction surveys
- Guided visits with local bus enthusiasts (“busólogos”)
- Active engagement with manufacturers





Women in Public Transport Incentive Program

Vision

By 2028, Salvador will have developed and implemented a program to **attract and retain women** in the public bus transport, workforce, promoting **gender equality** and **inspiring cities in Brazil and around the world**



Results

- Number of **female bus drivers doubled**
- Promotion of the **first five female drivers to BRT Salvador**
- **30% increase** in female participation in the **maintenance sector**
- New edition of the “Women Behind the Wheel” program with **more than 50 openings**
- **Awards** received at:
 - Smart City Expo Curitiba
Brazilian Awards 2025
 - Urban Mobility Park 2025



Fleet renewal | Euro VI

Through Novo PAC de
Renovação de Frota:

- Public acquisition
- ~500 buses (25% total fleet)
- R\$ 364 M
- Fleet will be leased to incumbent bus operators



Accelerating the transition in Salvador

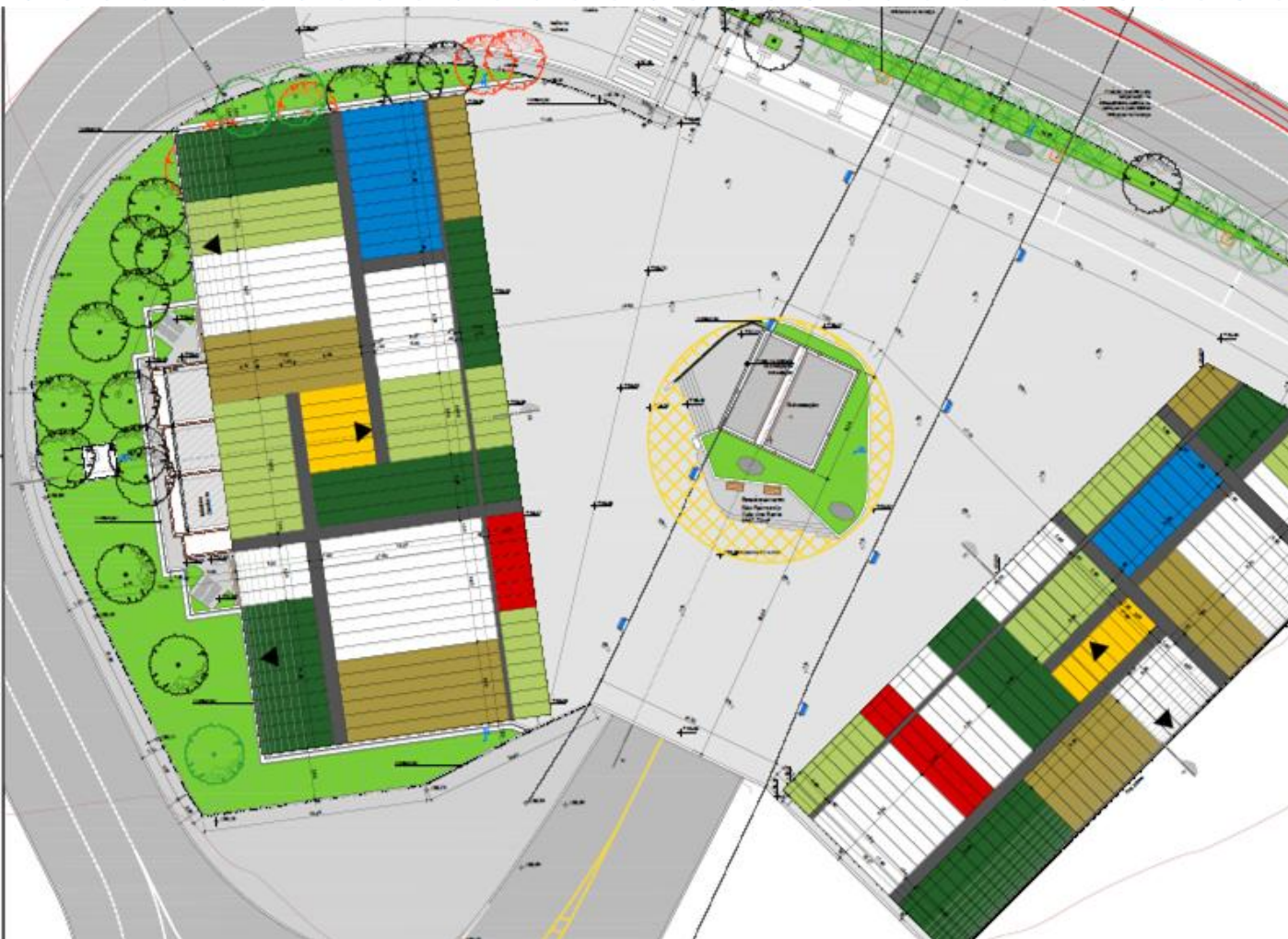


Financing of new electric buses through the World Bank credit operation

- +100 e buses, including articulated
- Construction of at least one additional charging infrastructure

Operational testing with vehicles from different manufacturers

Accelerating the transition in Salvador



- **New charging infrastructure development**
 - Adjacent to BRT corridor
 - At least 24 charging points for 15 m and articulated buses
 - 2.5 MVA – medium-voltage infrastructure
 - Driver comfort module

Future Medium- and High-Capacity Transit Network

+ 18 km of BRT
+ 49 km of BRS

36 km of Metrô
39 km of LRT
04 km of cable car



**Secretaria de
Mobilidade**



**Prefeitura
de Salvador**

Modelo de negócios atual



Frota

• Operador



Energia

• Operador



Infraestrutura de recarga

• Poder público



Manutenção

• Operador



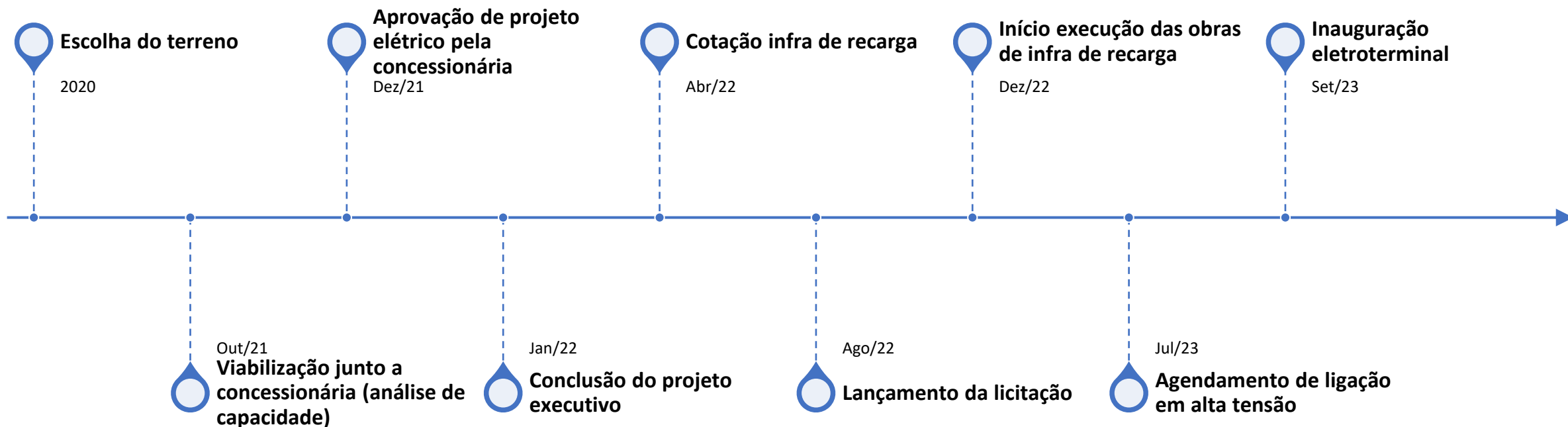
Operação

• Operador



Eletroterminal de recarga em área pública

Linha do tempo



Motivação

Salvador apresenta os menores índices de participação feminina no setor de transporte público entre as cidades avaliadas pelo Grupo de Benchmarking QualiÔnibus.

- **0,33%** das motoristas do STCO são mulheres (12 no total)
- **17,5%** dos cobradores do STCO são mulheres (631 no total)

