



CIUDAD DE MÉXICO  
CAPITAL DE LA TRANSFORMACIÓN

# Public Transportation in Mexico City

SECRETARY OF MOBILITY



# 01 | Integrated Mobility Card



CIUDAD DE MÉXICO  
CAPITAL DE LA TRANSFORMACIÓN

SECRETARÍA  
DE MOVILIDAD

- The Integrated Mobility Card, implemented in 2019, is the interconnection payment method between the city's different transport systems and is accepted on:

Metro	Metrobús	Light Rail
Trolleybus	Cablebus	RTP
Ecobici	Mexibus	Mexicable

- Between October 2024 and August 2025, more than 17 million top-ups were recorded, representing a cumulative total of 875.5 million pesos.
- As for the merchant network, there has been an increase, with around 29,000 affiliated points, reflecting significant adoption of this service and clear progress toward financial and digital inclusion in urban mobility.



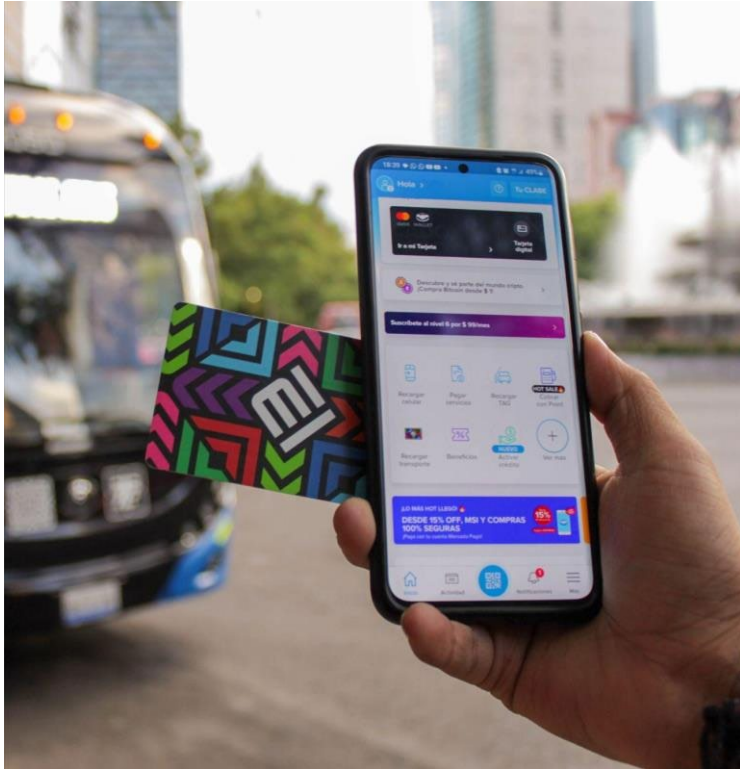
# 02 | Impact of the Integrated Mobility Network (MI)



CIUDAD DE MEXICO  
CAPITAL DE LA TRANSFORMACION

SECRETARIA  
DE MOVILIDAD

# Monthly impact of the Integrated Mobility Network (MI)



- Metrobús, 35.7 million trips, with 7 lines and 843 units.
- Transport Regulatory Agency (ORT) in charge of Transport Corridors and Zonal Services, 3 million trips per month with 21,000 units – Coming from the State of Mexico and the City.
- Passenger Transport Network (RTP), 6.0 million trips, in 07 Modules with 102 general routes and 1,451 units, in the same period.
- Mexico City Electric Transport Service (STE): Cablebus 3.4 million, on 3 lines with 753 units.
- Trolleybus with 7.9 million, 13 lines with 393 units.
- Light Rail, 2.9 million trips, on 22 units.
- The STC Metro 94.3 million trips, on 12 lines with 276 units— 40% from the State of Mexico.
- Public bicycle system (ECOBICI) 1.8 million trips, with 9,308 bicycles.



# 03 | Electromobility



# Electric Transport System

The growth of the Cablebús continues with the planning and construction of three more lines that represent a driver of territorial inclusion:

- **Line 4:** Tlalpan City Hall, with a length of over 11 km and 8 stations. It will connect CETRAM Universidad – Pedregal de San Nicolás.
- **Line 5:** will run approximately 15.4 km with 7 stations and two connecting the Magdalena Contreras and Álvaro Obregón boroughs, with a connection to the Metro network at the Mixcoac station.
- **Line 6:** 12.4 km long with 7 stations, connecting Tláhuac and Milpa Alta.



CIUDAD DE MÉXICO  
CAPITAL DE LA TRANSFORMACIÓN

SECRETARÍA  
DE MOVILIDAD



# Electric Transport System

## Light Rail

- Addition of 17 new double-car trains to double passenger capacity.

## Trolleybus

- Line 0: will cover 46 kilometers with a range of 10 municipalities, with the aim of improving cross-city connectivity and reducing congestion in the city center (Chapultepec to Ciudad Universitaria section).
- Trolleybus - Line 14 (Metro Universidad to CETRAM Huipulco)





# 04 | Passenger Transport Network (RTP)

- A fleet of 50 electric buses was added, operating on routes covering 37.6 km and 83.6 km respectively, which improved service frequency and increased the number of passengers transported.
- The process of acquiring six tow trucks began aimed at strengthening operations on the road.
- The "Centrobús" will be implemented, with 11 electric units serving a new route that will cover the most representative sites and monuments in the heart of the capital.
- On the outskirts, RTP will expand the operation of five pilot routes to ensure mobility and facilitate access to basic services, workplaces, and educational centers, promoting social inclusion.



CIUDAD DE MÉXICO  
CAPITAL DE LA TRANSFORMACIÓN

SECRETARÍA  
DE MOVILIDAD

# 05 | Ecobici



CIUDAD DE MÉXICO  
CAPITAL DE LA TRANSFORMACIÓN

SECRETARÍA  
DE MOVILIDAD



- It has 689 bike stations in 118 neighborhoods in six municipalities.
- Fleet of 9,308 bicycles
- 256,910 registered users.
- It went from 5.3 million trips in 2022 to a significant 22.6 million in 2024
- Growth of 7,000 new bicycles with 300 new bike stations is planned for the expansion of the system in five additional municipalities

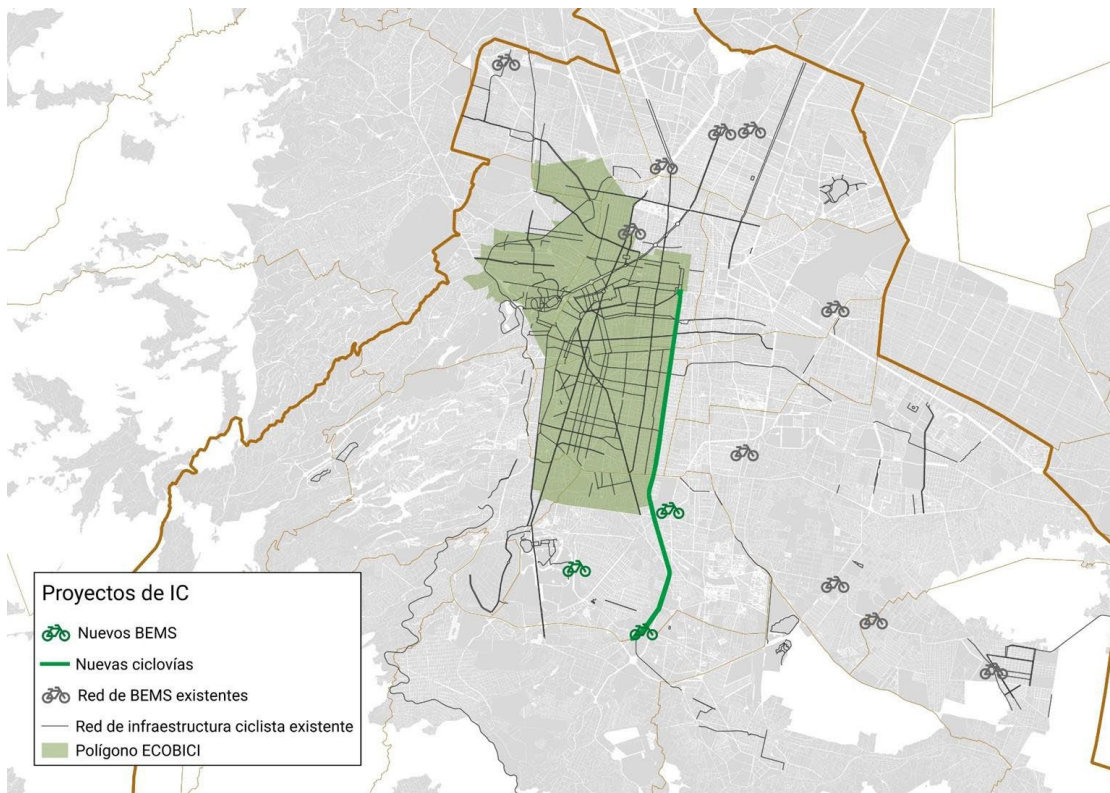


# 06 | Cycling Infrastructure



# Active Mobility Projects Cycling Infrastructure (IC) 2025 - 2026

- In 2024, we had 573.22 km of CI and 10 bicycle parking facilities.
- By 2025, it is estimated that there will be:
- 80 km more, with the Tlalpan Bike Path
- will build 32 km, from Fray Servando to San Fernando, plus the cross-town circuits connected to the existing IC
- 3 more bike parking facilities in Huipulco, Tasqueña, and Universidad.





**CIUDAD DE MÉXICO**  
CAPITAL DE LA TRANSFORMACIÓN

# Thank you!

SECRETARY OF MOBILITY

