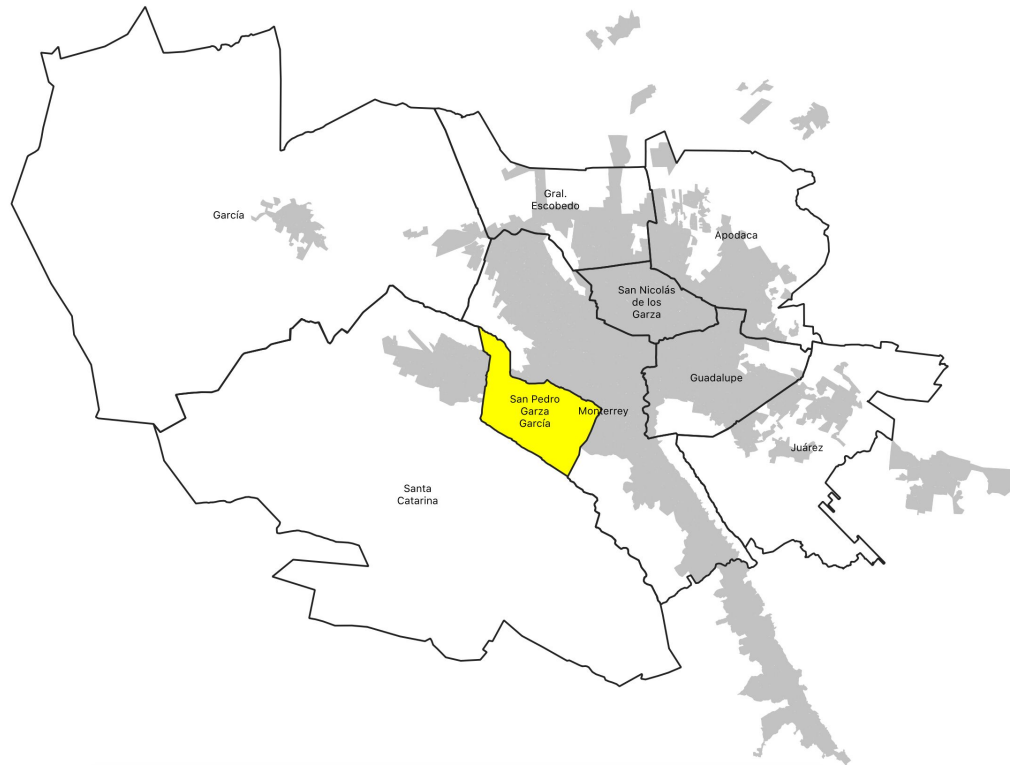


A satellite-style map of Mexico and the surrounding region. The landmasses are shown in shades of green and brown, representing vegetation and terrain. The oceans are a deep blue. A white dot is placed on the northern coast of Mexico, with a white line extending to the right where the text is located. The text is in a white, sans-serif font.

**San Pedro Garza García**  
Monterrey Metro Area, Mexico

implang

San Pedro Garza García



## San Pedro Garza García:

**130,000** inhabitants

**150,000** vehicles

**900,000** daily trips

**70%** by car



2021 — 2024

# Simultaneous urgent actions

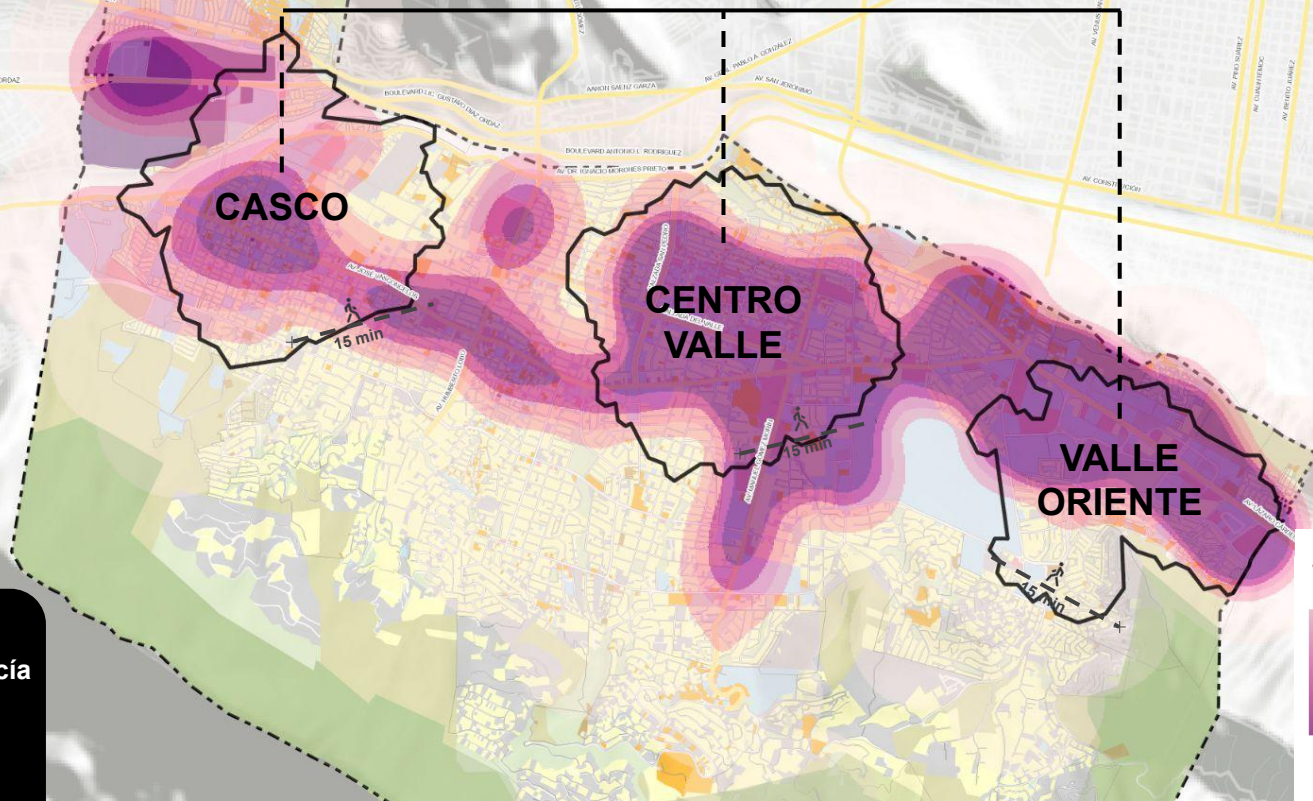
Stop investing in road  
expansion

Invest in walkable  
communities





## Three 15 minute districts



### JOB DENSITY

- Menor ocupación
- + Mayor ocupación



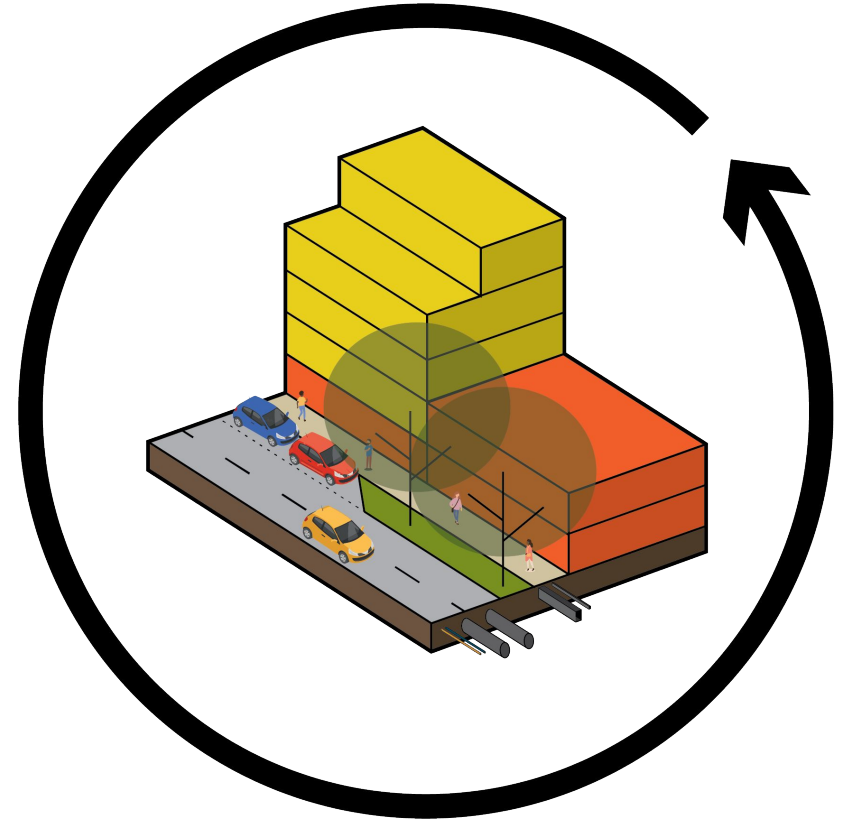
**Municipio de San Pedro Garza García**  
Área: 7,019 ha  
Población: 132,128  
Empleo: 131,862

## 3 key actions to create walkable communities

*Accessible and comfortable sidewalks*

*Human scale buildings, with housing and active ground floor*

*Green infrastructure and new services*







Office Class

Office DEPOT

JERO 198

Gana el 11% anual y Sientete extraordinario

AT normal 11.00% GAT real 6.63%

OXXO

TORTAS BERNAL

ASIS

ASIS

REPARTIDORES





CALLEJERO

Hotels

ALLE







f @dcjpcoscentito SERVICIO A DOMICILIO © 2018 DC COMICS

Autoservicio  
La Zorra

WALMART



**E** 

Rio Orinoco

-  Rio Grifalva
-  Rio Tamazunchale
-  Rio Moctezuma  
Parque Bicentenario
-  Rio Rosas
-  Av. Gómez Morán

 DISTRITO CENTRO VILE





OS









**Walkable streets =**

Mobility

Economy

Community

Ecology

Health

Resilience

Identity

Safety

implang  
San Pedro Garza García

