

How to Create Inclusive Cities and Places for Babies, Toddlers and Caregivers: Engagement Methods from Tirana

Relationship Center
(Qendra Marrëdhënie)
“Chen-dra Mar-the-knee-uh”

 @qendra_marredhenie  @Qendra_M

First 1,000 days

Extra vulnerable to:
-air pollution
-noise pollution
-stress from caregiver



Birth
25%



1 year
70%



3 years
85%



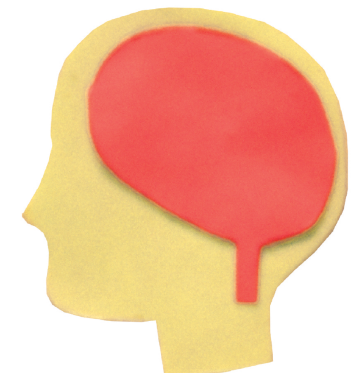
5 years
92%



7 year
95%

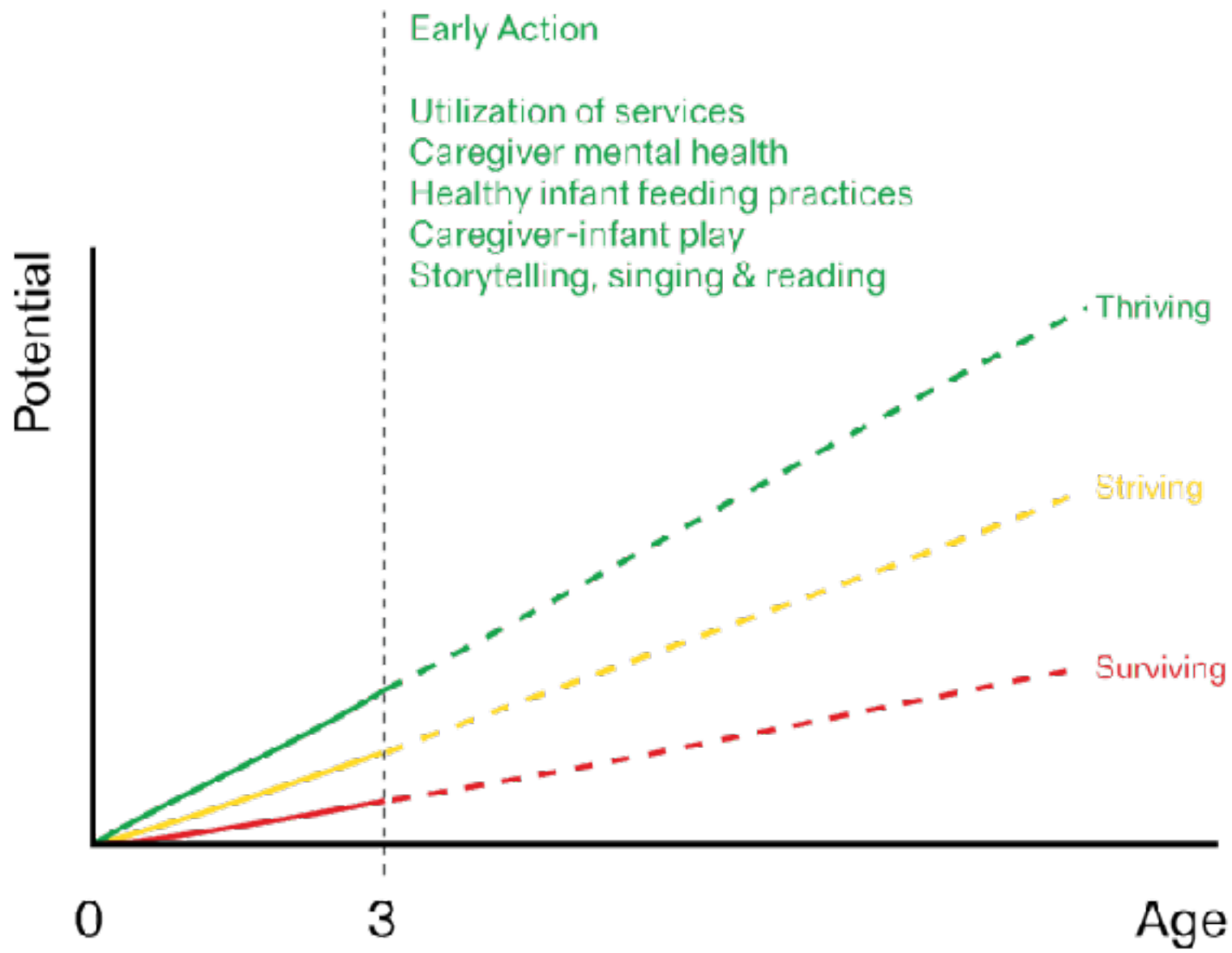


10 year
98%



Adult
100%

...but how ?!



Tirana, 1988





In Albania 44% of national road fatalities are pedestrians compared to 20% in the EU

Obesity in Albania reached a staggering 16% of children aged 0-5, surpassing the UK and the US in 2021





Not asking for much...

Who in this picture do we know for sure isn't going to be contributing to the discussion?









Park lëgjor

Hapësira jeshile
në të djathtë
për pensionistë

Aktivitetet
ky që
bëjnë sot

What kind of contribution do we need?



Always the least popular corner of the party

Kruget
per
Fëmijet



Kruget për Fëmijët te Gjon Buzuku

310 m²
Llogaritë zakonisht
në hapësirën

25 m²
Niveli
për të ardhur

25 m²
Niveli
për të ardhur

A diagram showing a street layout with dimensions and labels. It includes a 310 m² area for children's play, a 25 m² level for arrival, and another 25 m² level for arrival. The diagram shows a street with buildings and a playground area.

Valuable feedback

JUL 22, 12:31 PM



Last night was a mega hit with the kids. First question matia asked when he woke up was 'is this going to happen again next year' 😂



I said well I hope its happening sooner













Thank you!

Relationship Center
(Qendra Marrëdhënie)
“Chen-dra Mar-the-knee-uh”

 @qendra_marredhenie  @Qendra_M